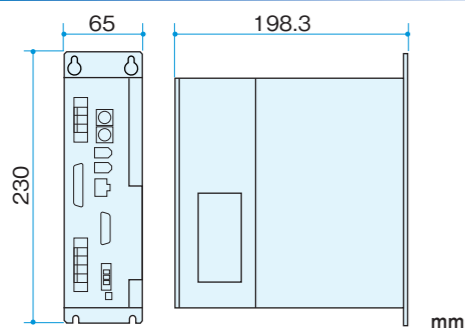


AC SERVO NUTRUNNER CONTROLLERS



Dimension



How to order

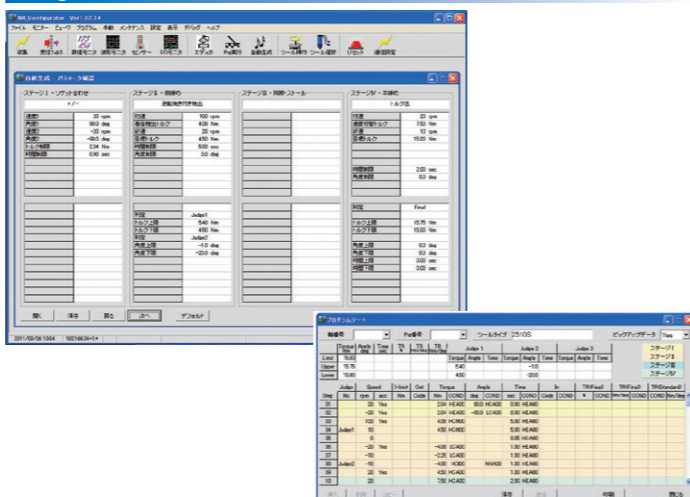
CPS - NR - 75 ** - □

Hardware FA network (optional)
 Software CC:
 DV: Contact us
 PF: for more details.
 PN:
 EI:



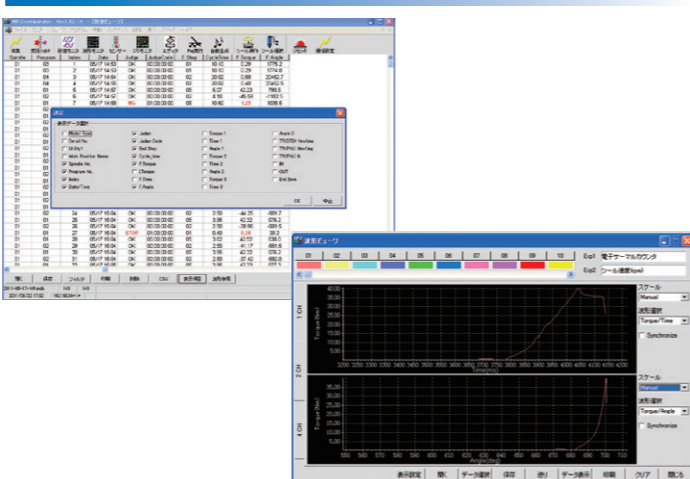
We provide various more "AC Servo" related products. Please feel free to contact us for any further information.

Program Screen



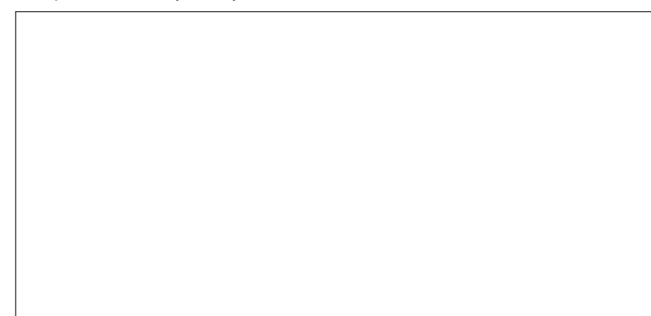
- In addition to final judgment, further judgments at 3 arbitrary points can be set up.
- Automatic program generator is on-board.
- With automatic checking function of input errors, programs can be reliably created.

Numerical and Waveform Monitor Screen

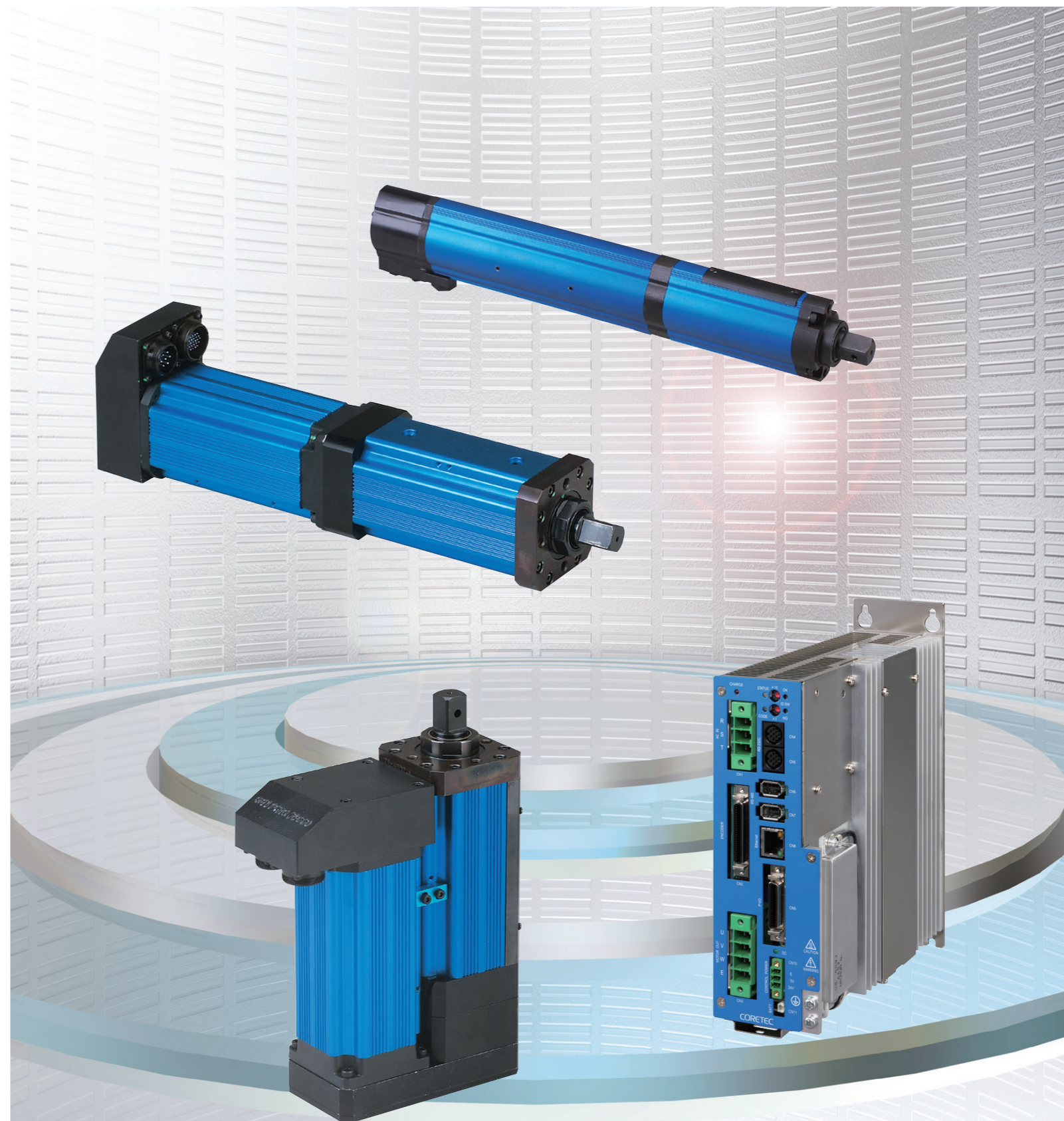


- Numerical screen displays up to 31 selectable items as numerical results; including "Model Type" and "Work Position Name." *
- Traceability function is available by linking product serial number and execution result.*
- Waveform monitor displays multiple channels on the screen.
- Extended items for waveform monitor are available: Tool speed, torque rate and more. (*: optional function)

The specifications may modify without notice.



AC SERVO NUTRUNNER



CORETEC INC.

Headquarters:
 500 Akahama, Soja-shi, Okayama 719-1121, Japan
 TEL +81 866-94-9016 FAX +81 866-94-1178
<http://www.coretec.co.jp/> E-mail: info@coretec.co.jp

FEATURES
1 Light Weight and Slim with Inline Configuration

- The housing accommodates all integral parts; torque transducer, gears, motor, and encoder.
- External moments can be absorbed by the housing to eliminate zero-balance fluctuations of torque transducer. → Increased reliability of tightening quality.
- The slim and flat body allows for multiple spindle applications with minimum center distances.

2 Full Digital Processing

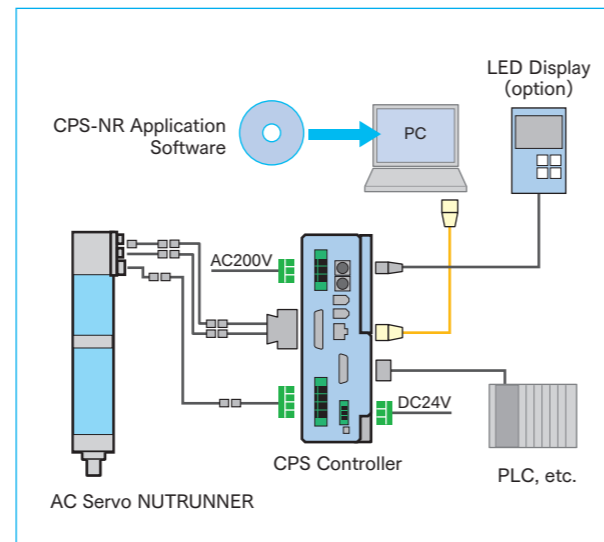
- Torque transducer with built-in amplifier and AC/DC converter board.
- Improved noise resistance by transferring AC/DC converted digital signals to the controller.
- Easy tool change with no analog adjustments.

3 Multiple Tightening Methods

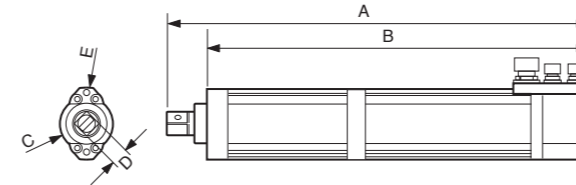
- Full operations from start of tightening to finish performed by a single program (32 steps max.)
Can store up to 31 programs.
- Applicable to yield point control method as well as torque control and angle control.

4 Various Data Processing Software

- The controller memory can store up to 2700 data.
- Data Control Filing System (DATA-CON) available as an option.
(Capable of storing, searching and verifying collected data)

SYSTEM CONFIGURATION

2500S series
MIDDLE TORQUE RANGE MODEL (20 - 160Nm)

| Model No. | Torque Range (Nm) | Maximum RPM (rpm) | Tool Weight (kg) |
|-----------|-------------------|-------------------|------------------|
| 2505S | 19~56 | 610 | 5.5 |
| 2509S | 33~94 | 285 | 5.5 |
| 2515S | 42~120 | 285 | 5.5 |
| 2510S | 24~68 | 490 | 5.7 |
| 2520S | 57~162 | 230 | 5.7 |



| Model No. | A | B | φC | □D | φE |
|-------------|-----|-----|----|-------|---------|
| 2505S/2509S | 430 | 394 | 56 | 12.7 | 76 |
| 2515S | 460 | 417 | 56 | 19.05 | 76 |
| 2510S/2520S | 518 | 475 | 56 | 19.05 | 76 (mm) |

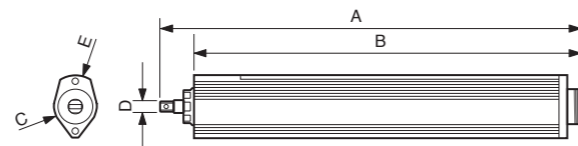


Please contact us for angle head and offset gear applications. We will provide a separate leaflet.

2300S series / 2400Q series
LOW TORQUE RANGE MODEL (2 - 40Nm)

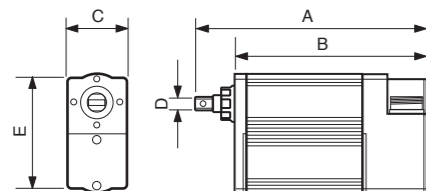

Please contact us for angle head and offset gear applications. We will provide a separate leaflet.

| Model No. | Torque Range (Nm) | Maximum RPM (rpm) | Tool Weight (kg) |
|-----------|-------------------|-------------------|------------------|
| 2301S | 2~6 | 1080 | 1.8 |
| 2302S | 5~22 | 540 | 1.9 |
| 2304S | 12~34 | 250 | 1.9 |

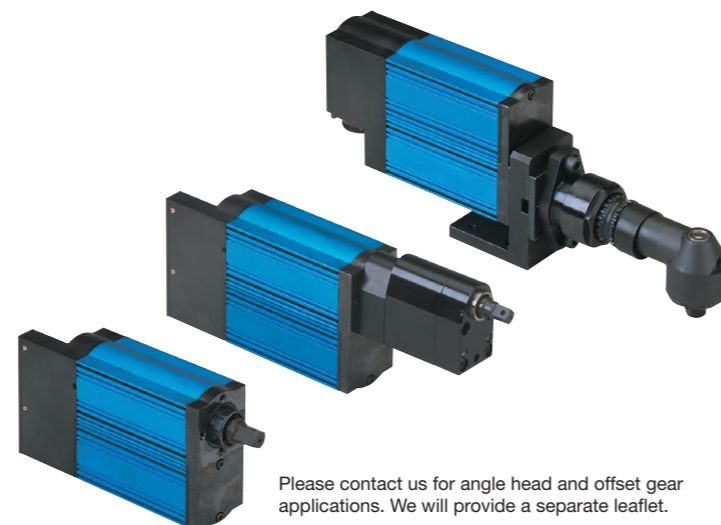


| A | B | φC | □D | φE |
|-----|-----|----|-----|---------|
| 367 | 338 | 38 | 9.5 | 54 (mm) |

| Model No. | Torque Range (Nm) | Maximum RPM (rpm) | Tool Weight (kg) |
|-----------|-------------------|-------------------|------------------|
| 2402Q | 6~17 | 410 | 3.3 |
| 2405Q | 16~47 | 190 | 3.3 |



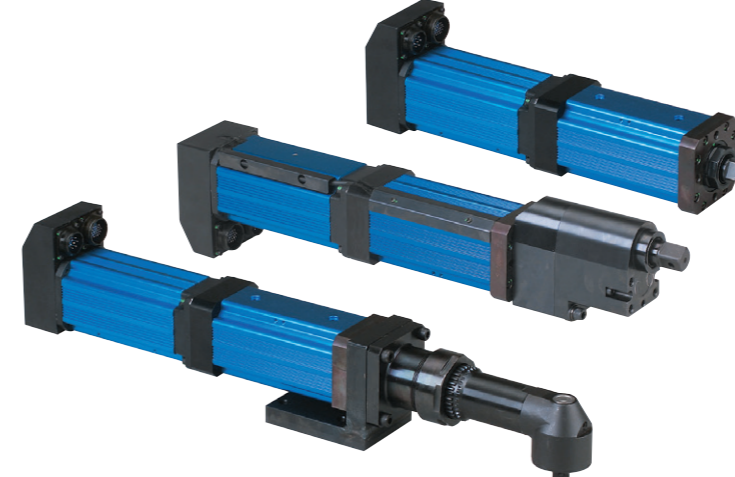
| A | B | C | □D | E |
|-----|-----|----|------|----------|
| 215 | 179 | 54 | 12.7 | 109 (mm) |



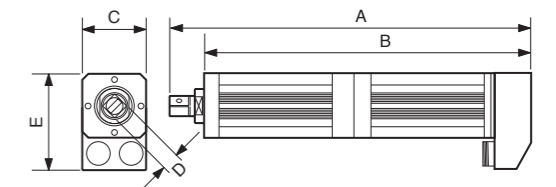
Please contact us for angle head and offset gear applications. We will provide a separate leaflet.

2600S series / 2600Q series
HIGH TORQUE RANGE MODEL (100 - 270Nm)

Please contact us for angle head and offset gear applications. We will provide a separate leaflet.

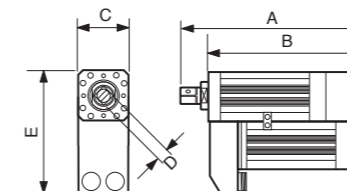


| Model No. | Torque Range (Nm) | Maximum RPM (rpm) | Tool Weight (kg) |
|-----------|-------------------|-------------------|------------------|
| 2620S | 63~179 | 240 | 9.0 |
| 2630S | 93~264 | 170 | 9.0 |

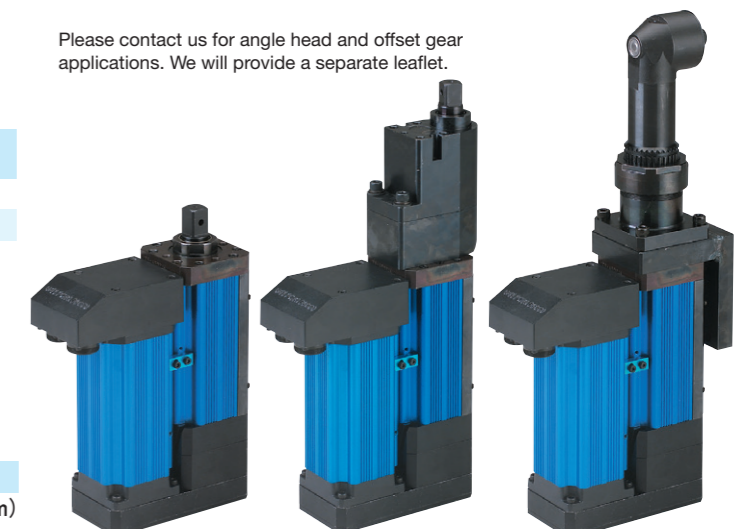


| A | B | C | □D | E |
|-------|-------|----|-------|------------|
| 445.5 | 402.5 | 79 | 19.05 | 118.5 (mm) |

| Model No. | Torque Range (Nm) | Maximum RPM (rpm) | Tool Weight (kg) |
|-----------|-------------------|-------------------|------------------|
| 2620Q | 63~180 | 240 | 9.5 |
| 2630Q | 90~255 | 170 | 9.5 |



| A | B | C | □D | E |
|-------|-------|----|-------|------------|
| 287.5 | 244.5 | 79 | 19.05 | 198.5 (mm) |



Please contact us for angle head and offset gear applications. We will provide a separate leaflet.