

Air Leak Tester that is Sophisticated yet Easy-to-Use



AIR LEAK TESTER LS-R700

■ Features



Easy-to navigate and intuitive interface with simple menu configuration



Waveform Display of Test pressure and Differential pressure



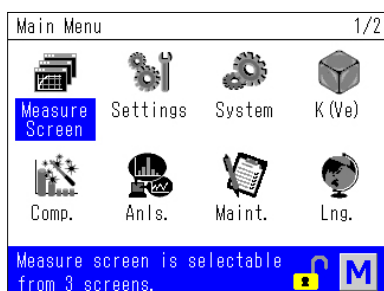
Mastering feature provides highly accurate test results



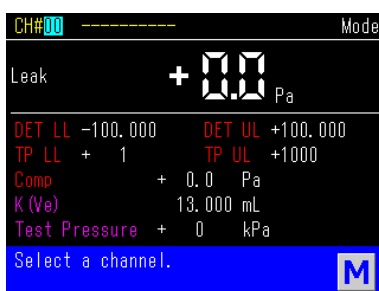
User selectable multi-language capability: English, Japanese and Chinese



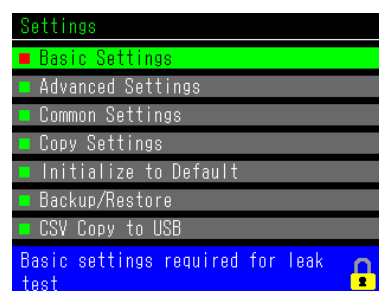
USB Port for easy test data management



Intuitive operation makes test parameter programming easy.



Measurement screens are selectable among 3 depending on the situation.

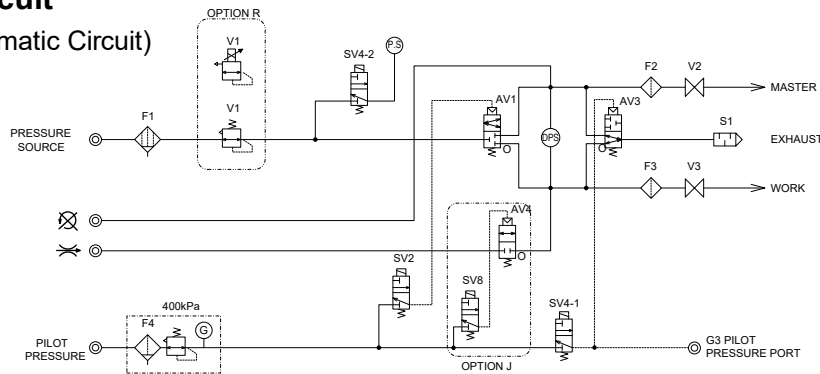


Settings Menu is easy-to-follow. The Guidance Bar at the bottom gives you a simple explanation what the item is.

Display	Color 3.5-inch LCD	Sensor Protection	Air-Blow (Intelligent Pneumatic Circuit): The pneumatic circuit is cleaned at the end of every leak test.
	Selectable from 3 different measurement screens		External Exhaust Valve Ready: Valve is sold separately.
Intelligent Pneumatic Circuit	Comes with self-check features: Sensor sensitivity, Air-valve performance	Exhaust Interference Prevention	Exhaust timing will be controlled for the cases where multiple cavities are tested simultaneously.
K(Ve) Automatic Setup	K(Ve) can be setup using Leak Master to measure leak coefficient to convert measured pressure to a flow rate.	Charge Hold	Tester pressurizes the tested part continuously. Used to locate leaks.
Leak Limits	Two sets of leak limits: Medium/Small leaks on Work-side (UL/UL2) and Master-side (LL/LL2)	Serial Communication	RS-232C: (Rear panel) USB: (Front panel)
Electro-pneumatic Control of Test Pressure	For the models come with Electro-pneumatic regulator, different test pressure can be set independently for each channel.	Other Display	Error Code, I/O Monitor, Channel Title, Counter
Noise Reduction NR	Eliminates noise by repeating the DET stage when readings falls between DET UL and DET UL2. (For canceling Cycle over settings)	Mastering Settings	Maximum Idle Time, Day of Week, Interval, Iteration, Consecutive Triggers, Mastering Limits
Inspection and Calibration	Offset and span check of Differential Pressure Sensor (DPS) Offset and span check of Pressure Sensor (PS)	Quick Mounting Brackets	Tester can be mounted/removed with only two screws. Good for mounting the tester in the limited space.
Compensation	Mastering, Auto-Drift Compensation, Fixed Compensation	Control I/O	Both for NPN-PNP Phoenix Contact connector: wire connection can be done with a flat-bladed screwdriver.
Self-check	Air-operated valve performance, DPS/PS Offset, CPU performance and others		

Pneumatic Circuit

(Intelligent 1 Pneumatic Circuit)



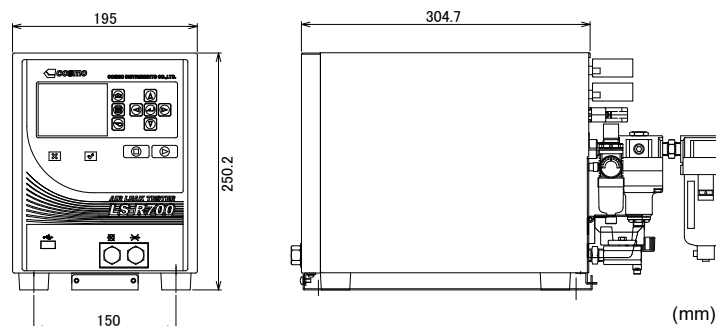
Specifications

Differential Pressure Sensor (Standard)	Resolution	0.1 Pa	Test Pressure source	Clean air regulated to the test pressure. The source pressure must be sufficiently higher than the test pressure.	
	Display Range	±999.9 Pa (Accuracy Guaranteed: ±1000 Pa)			
	Reading Accuracy	±2.5% of rdg ±1Pa 50Pa or lower: ±2Pa	Pilot Pressure	Clean air regulated from 400 to 700 kPa	
	Proof Pressure	5 MPa	Tube Diameter	Rc(PT) 1/4: Test pressure, WORK and MASTER ports 6mm quick disconnect fitting: Pilot pressure	
Display Unit	Test Pressure Unit	kPa, MPa, PSI, kg/cm ² , bar, mbar, mmHg, cmHg, inHg	CPU	SH-2A 144MHz DRAM 8MB	
	Leak Unit	Pa, kPa, mL/s, mL/min, L/min, Pa•m ³ /s, E-3 Pa•m ³ /s, Pa/s, Pa/min, *Pa/s, *Pa/min mmH ₂ O, inH ₂ O, mmHg, in ³ /min, in ³ /d, , ft ³ /h	RS-232C (D-SUB 9 pins)	I/F fixed length ID/F fixed length	Test parameters are transmitted as well as test results.
	K(Ve) Unit (Leak Coefficient)	mL, L, in ³ , ft ³		T/F fixed length	Only test results are transmitted
				Other formats	
Leak Display	4 digits	Sampling Rate: 10 times/s	USB Port	Test Data Output	Judgment, Leak, Test pressure, Channel#, Timers and others
Leak Limit Range	±999.9Pa			Test Parameters	Copy all the test parameters in a csv file
Number of Channels	32 channels (#0 to #31)				
Timers	Up to 999.9 s (Resolution: 0.1 s)		Accessories	Oil mist separator and regulator for Test pressure, Filter regulator for Pilot pressure, Quick mounting brackets, Control I/O connector, Power cord, Inspection Record, Operation manual, Traceability related documents	
Power Source	100 to 240 VAC ±10% at 50/60 Hz, 80 VA max				
Ambient Temperature	5 to 45 °C				
Humidity	80 %RH or less / no dew condensation				
Mass	Approx. 10 kg (Standard model)				

LS-R700 – ABC-D

A	Pneumatic Circuit	A1: Intelligent 1 Pneumatic Circuit, A2: Intelligent 2 Pneumatic Circuit AS1: Small Volume A1 Circuit, AS01: Micro Volume Circuit, C: Secondary Pressure Circuit			
B	Pressure Range	Precision Regulator	L02: 5 to 20 kPa, L: 10 to 100 kPa, M: 50 to 800 kPa, V: -5 to -100 kPa, H20: 2.0MPa or lower (H20 models come with no regulator.)		
		EP Regulator	LR: 10 to 95 kPa, MR: 50 to 800 kPa, VR: -5 to -75 kPa		
C	Options	J: Leak Master Ready, B: Bypass Circuit Ready (without Precision Regulator and filter), B1: Bypass Circuit Ready (with Precision Regulator), D4: DPS Range: ±10 kPa, W: Come with Stop Valve Open/Close Check Switch, PX2: Rechargeable Battery (CE not conformed)			
D	Power Cord	VA: 125VAC/7A Length: 3 m, VE: 250VAC/10A Length: 2 m (CE conformed) VK: 250 VAC Length: 2 m (Only for Chinese customers)			

External Appearance



* The contents in this Product Information are as of June 2020. The information is subject to change without prior notice.

Cosmo Instruments Co., Ltd.

2974-23 Ishikawa, Hachioji, Tokyo 192-0032 Japan

<http://www.cosmo-k.co.jp/>

Phone: +81-(0)42-642-1357 Fax: +81-(0)42-646-2439

China: Cosmo (Shanghai) Trading Co., Ltd.	+86-(0)21-6575-6880
Shanghai, Tianjin, Guangzhou, Chongqing, Changchun, and Wuhan	
Korea: Cosmo Korea Co., Ltd.	+82-(0)32-623-6961
Taiwan: Taiwan Cosmo Instruments Co., Ltd.	+886-(0)2-2707-3131
Malaysia: COSMOWAVE SDN.BHD.	+60-(0)3-51626677
Thailand: Cosmowave Technology Co., Ltd.	+66-(0)2-7361667
Indonesia: Pt. Cosmowave	+62-(0)21-42900043
Vietnam: Cosmowave Technology Co., Ltd. Vietnam Representative Office	+84-(0)47876085

India: Cosmo Instruments India Pvt. Ltd. Head Office	+91-(0)124-421-0946
Cosmo Instruments India Pvt. Ltd. South Zone Regional Office	+91-(0)9663384423
Cosmo Instruments India Pvt. Ltd. Pune - Chakan Office	+91-(0)20-6933-2345
Cosmo Instruments India Pvt. Ltd. - Chennai Office	+91-(0)9994364454
Germany: Cosmo EU Solutions Technology GmbH	+49-(0)1212-383671-71
USA: Cosmo Solutions Technology, Inc.	+1-248-488-2580
Mexico: Cosmo De Mexico	+52 472 748 62 94
Brazil: Tex Equipamentos Eletronicos Ind. Com. Ltda.	+55-(0)11-4591-2825
Australia: Industrial Research Technology Pty. Ltd.	+61-(0)412-176-674

LS-R700-985B1-G